

PORTFOLIO

DR. TAZYEEN ALAM

PH.D. | M.ARCH | B.ARCH

URBAN DESIGN & LANDSCAPE PLANNING





Profile

Urban and landscape professional with 7+ years of experience in spatial planning, water-sensitive design, and urban regeneration across Europe and Asia. Combines advanced spatial analysis with design-oriented thinking to develop resilient and implementable landscape strategies. Experienced in translating complex urban systems into actionable design frameworks, with exposure to interdisciplinary collaboration across research, policy, and practice.

Dr. Tazyeen Alam

Phone +351 920603648
Mail tazyeen.alam@gmail.com
Website www.tazyeenalam.com
Address São Mamede De Infesta, Porto Region, Portugal

Education

2020-2024 IIT Kharagpur, India
Doctorate (Landscape & Urban Planning)

2017-2019 Jamia Millia Islamia, India
Master of Architecture (Urban Regeneration)

2012-2017 Aligarh Muslim University, India
Bachelor of Architecture

Experience

2024 – Present Bantu Studio Design & Research, Spain & Africa
Climate & Urban Sustainability Consultant

2024 – 2026 University of Cagliari, Italy
Landscape & Territorial Researcher

2020 – 2024 IIT Kharagpur, India
Landscape & Urban Planning Researcher

2019 – 2019 BBPL, India
Landscape & Urban Designer

2017 – 2019 The Studio-Axis Design, India
Landscape Architect

2017 – 2017 Architectonic Services, India
Architecture Intern

Languages

English <i>Proficient (C1)</i>	Bengali, Hindi, Urdu <i>Native</i>
Arabic <i>Intermediate</i>	Portuguese <i>Beginner/Learning</i>

Latest Publication

Alam, T., Dastoum, M., Askarizad, R., & Garau, C. (2026). Morphological and Fractal Diagnostics for Sustainable Transport Planning in Sensitive Tourism Landscapes. *Sustainable Cities and Society*. 143, 107365. <https://doi.org/10.1016/j.scs.2026.107365>

Alam, T. (2026). Integrating Space Syntax and Bathtub Flood Modelling to Assess Accessibility Impacts of Sea-Level Rise in Copenhagen's Historic Core. *Journal of Environmental Management*. 397 (128314). <https://doi.org/10.1016/j.jenvman.2025.128314>

Garau, C. & **Alam, T. (2026).** Scaling Urban Complexities using Space Syntax and Fractal Analysis: The Sardinian Cities in Italy as a case study. *Journal of Urban Design*, 1–20. <https://doi.org/10.1080/13574809.2026.2629313>

Digital Skills

Design & Documentation

AutoCAD	██████████
Revit	██████████
Lumion	██████████
SketchUp	██████████

Spatial Analysis and Data Modelling

QGIS	██████████
ArcGIS	██████████
R (coding)	██████████

Visualisation & Presentation

Adobe Illustrator	██████████
Adobe Photoshop	██████████
Adobe InDesign	██████████
Power BI	██████████
Tableau	██████████
Microsoft Office Tools	██████████
Canva	██████████

Emerging Technologies

ChatGPT & Claude	██████████
AI-assisted analysis	██████████

TABLE OF CONTENT

01

GCK Pilot Project
*Feasibility Analysis & Design Interpretation
(Landscape & Public Realm)*



02

Badshahpur Public Realm
Landscape Plan



03

Canal Redevelopment
Urban Territories



04

Residential Landscape
Master Plan & Landscape



05

Residential Complex
Landscape & Concept



06

Institutional Centre
Landscape & Concept



07

Residential Apartment
Landscape Design





Community Pollinator gardens favouring native/naturalised seasonal flowering species where possible to help attract native fauna and help encourage increased pollination throughout the site.



Forest Park to the base of the Productive Green/Borders linking the site to the existing wetlands and integrating into areas of existing woodland to improve and provide greater opportunities for migratory birds to nest and other local fauna.



ROW1 nature corridor embankment with species rich ground cover, shrub and small edible/flowering tree planting creating a strong ecological corridor which in time will form a continuous link to adjacent Settlements to form a continuous ecological loop as part of the wider 600ha masterplan habitat proposals.



Detention basin boardwalks / school nature trail with seasonal wet/dry grassland species and suitable tree planting connecting to the wetland habitat offering a similar habitat typology which may in time attract seasonal wading birds and other species en route to the wider wetland areas.



Blue Green Routes - with year round wet/dry grassland and shrub planting with tree planting throughout running East to West through the site, connecting the upper hill to the wetlands below



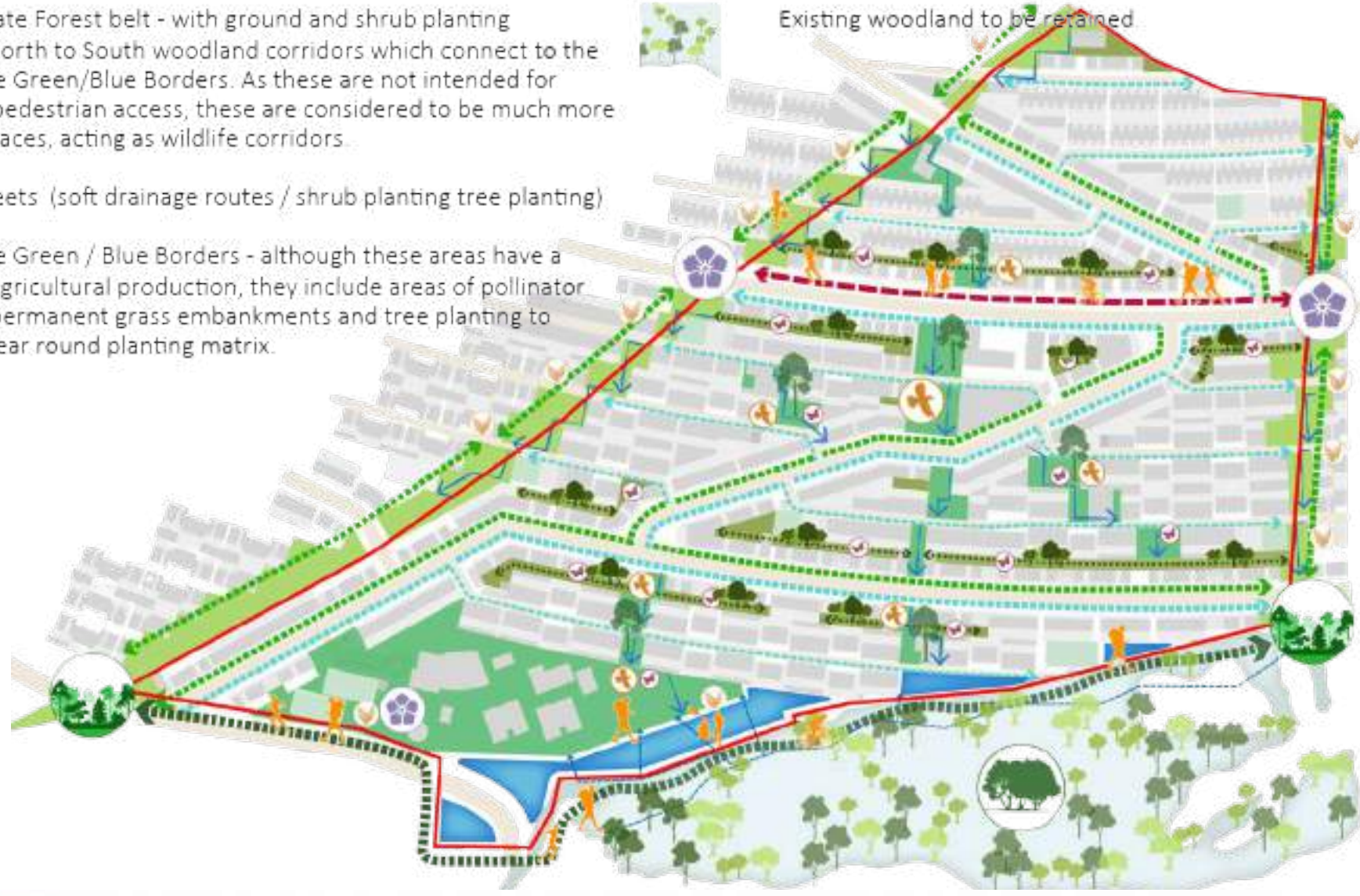
Semi-private Forest belt - with ground and shrub planting creating North to South woodland corridors which connect to the Productive Green/Blue Borders. As these are not intended for frequent pedestrian access, these are considered to be much more passive spaces, acting as wildlife corridors.



Green streets (soft drainage routes / shrub planting tree planting)



Productive Green / Blue Borders - although these areas have a focus on agricultural production, they include areas of pollinator gardens, permanent grass embankments and tree planting to create a year round planting matrix.



RWANDA AFFORDABLE HOUSING PILOT PROJECT - GREEN CITY KIGALI



- 1650 housing units
- Delivered under a PPP model
- Partners: Feilden Clegg Bradley Studios with Grant Associates (for FONERWA and KfW Development Bank).

IMPLEMENTATION LOGIC

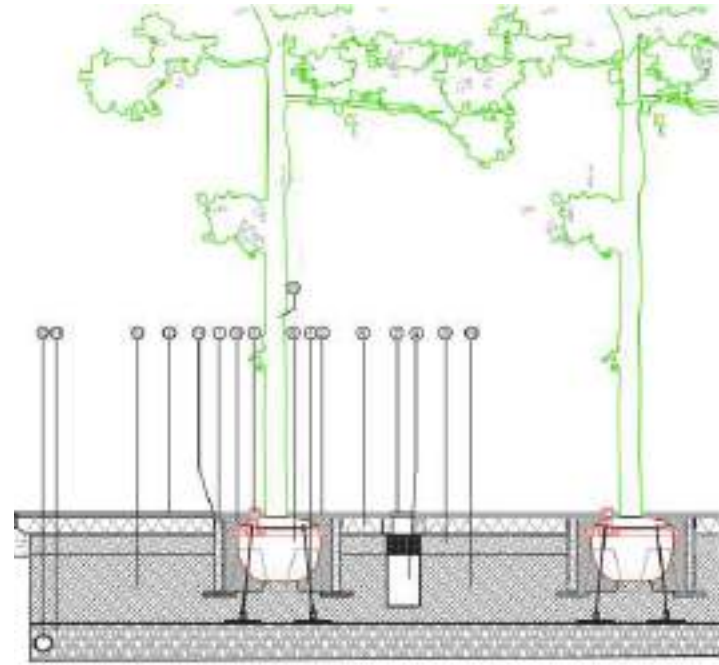
<p>CORRIDORS + DRAINAGE Primary corridors align with natural drainage pathways to manage runoff and direct water to wetlands and detention basins.</p>	<p>GREEN INFRASTRUCTURE Productive green zones stabilize soil, reduce erosion and enhance water retention through layered planting systems.</p>	<p>STREETSCAPE SYSTEMS Green streets integrate rain gardens, bioswales and shade trees for thermal comfort and pedestrian experience.</p>	<p>ECOLOGICAL CONNECTIVITY Woodland belts and habitat corridors support biodiversity, migration routes and long-term ecological resilience.</p>	<p>PHASING + GROWTH Blue-green systems structure phased development and ensure sustainable infrastructure-led urban expansion.</p>
---	--	--	--	---

A resilient landscape framework connecting people, nature and water – building a Green City for future generations.

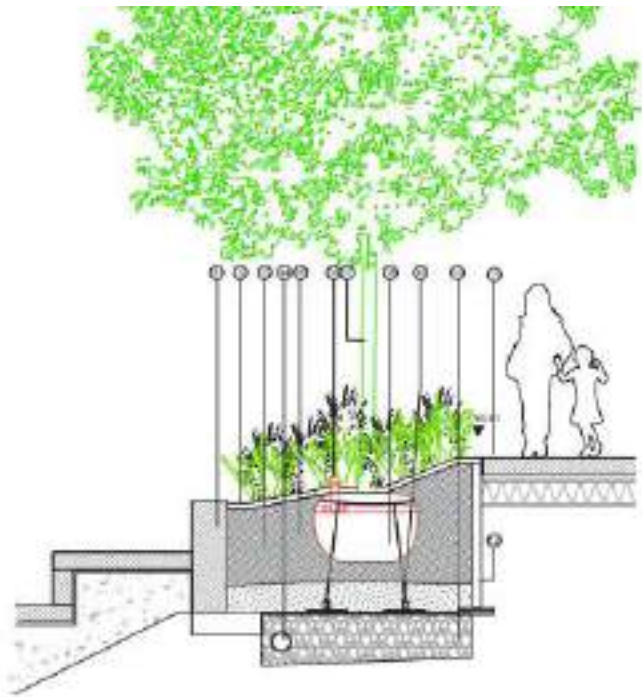
01

Location: Kinyinya Hill, Green City, Kigali
Area: 160.000 m²
Project Type: Affordable Housing Township
Status: Under Construction
Role: Landscape systems analysis, feasibility assessment, and design interpretation

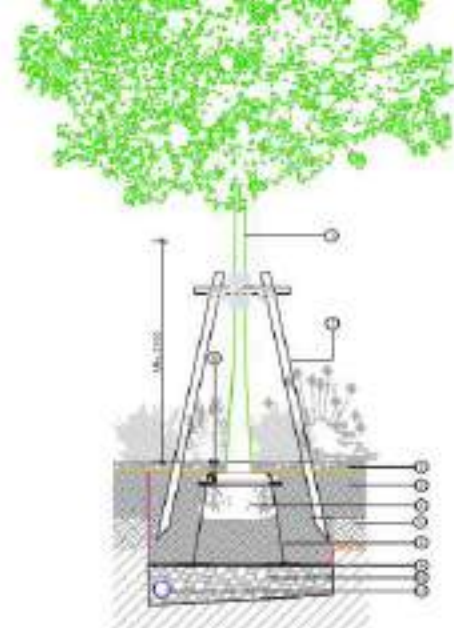
01 TREE STRATEGIES & DETAILS



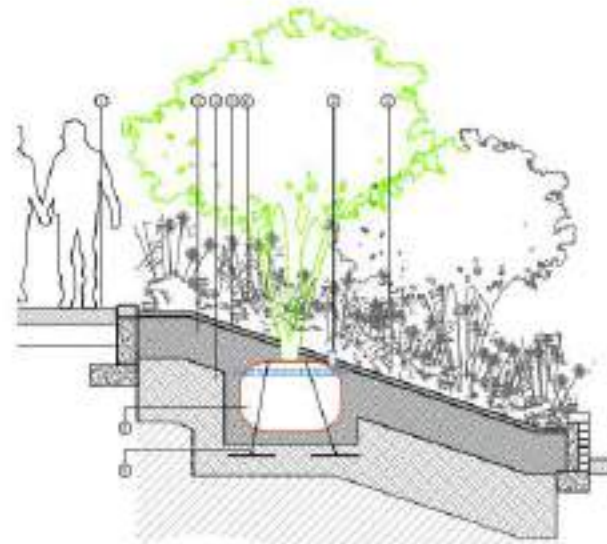
Typical Detail A - Example of tree pit detail (hard - paving)



Typical Detail B - Example of tree pit detail (hard - terracing)

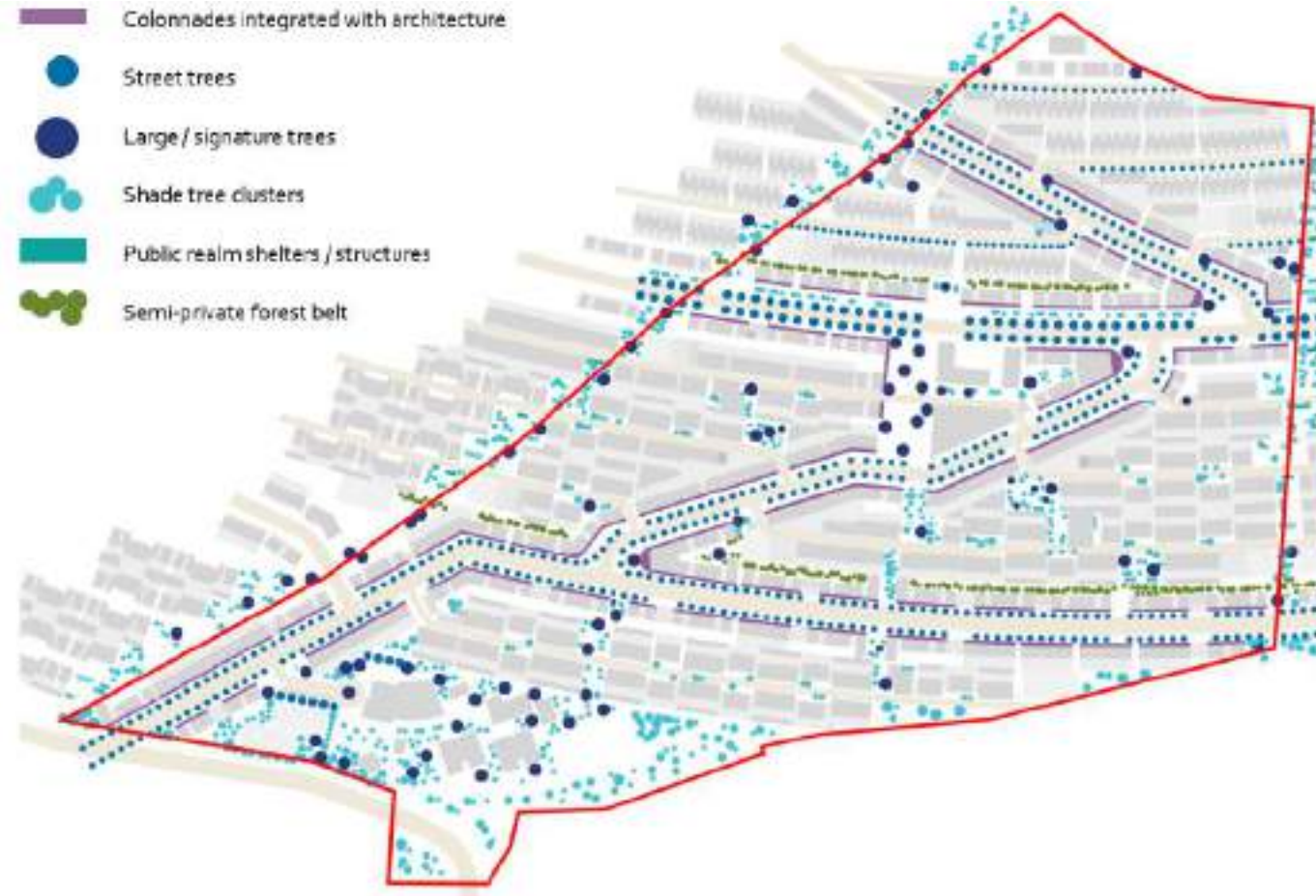


Typical Detail C - Example of tree pit detail (soft - single medium to large tree)



Typical Detail E - Example of tree pit detail (soft - 1:3 slope)

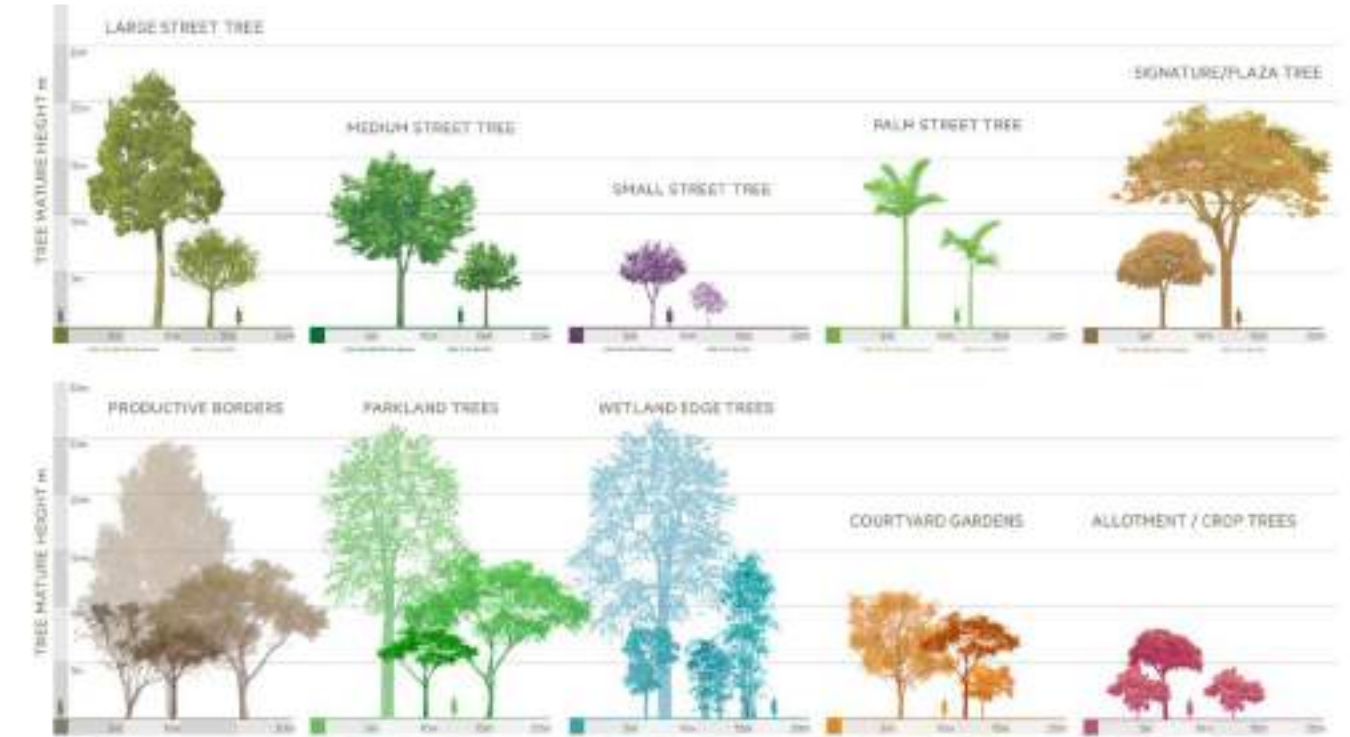
- Colonnades integrated with architecture
- Street trees
- Large / signature trees
- Shade tree clusters
- Public realm shelters / structures
- Semi-private forest belt



Shading strategy diagram



Tree Framework Diagram



IMPLEMENTATION LOGIC

DRAINAGE & STORMWATER
Trees and bio-swales work together to slow runoff, improve infiltration and support groundwater recharge.

THERMAL COMFORT
Layered canopy cover reduces heat gain, lowers surface temperatures and improves comfort.

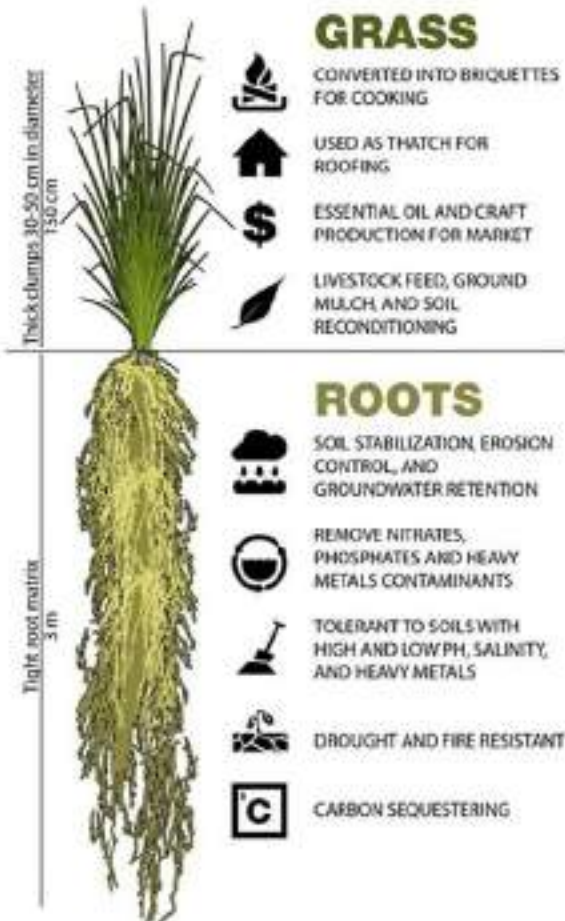
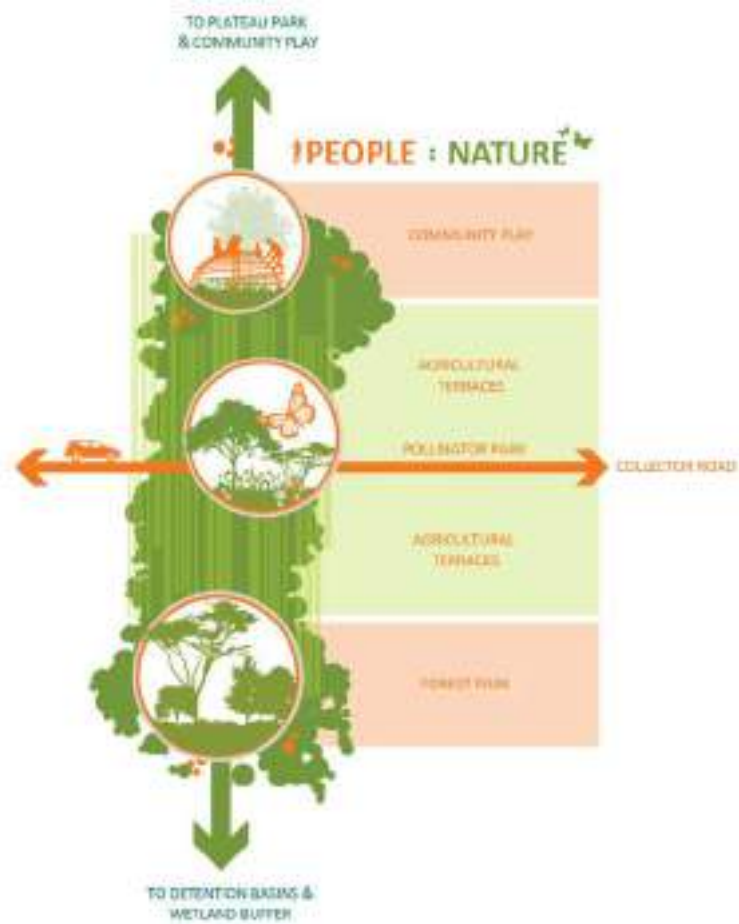
SOIL HEALTH & GROWTH
Adequate soil volume, root barriers and drainage layers ensure long-term tree health and stability.

SPATIAL HIERARCHY
Tree typologies define streets, edges, spaces and create a clear public realm structure.

BIODIVERSITY & HABITAT
Diverse native species support habitats, pollinators and urban biodiversity across the site.

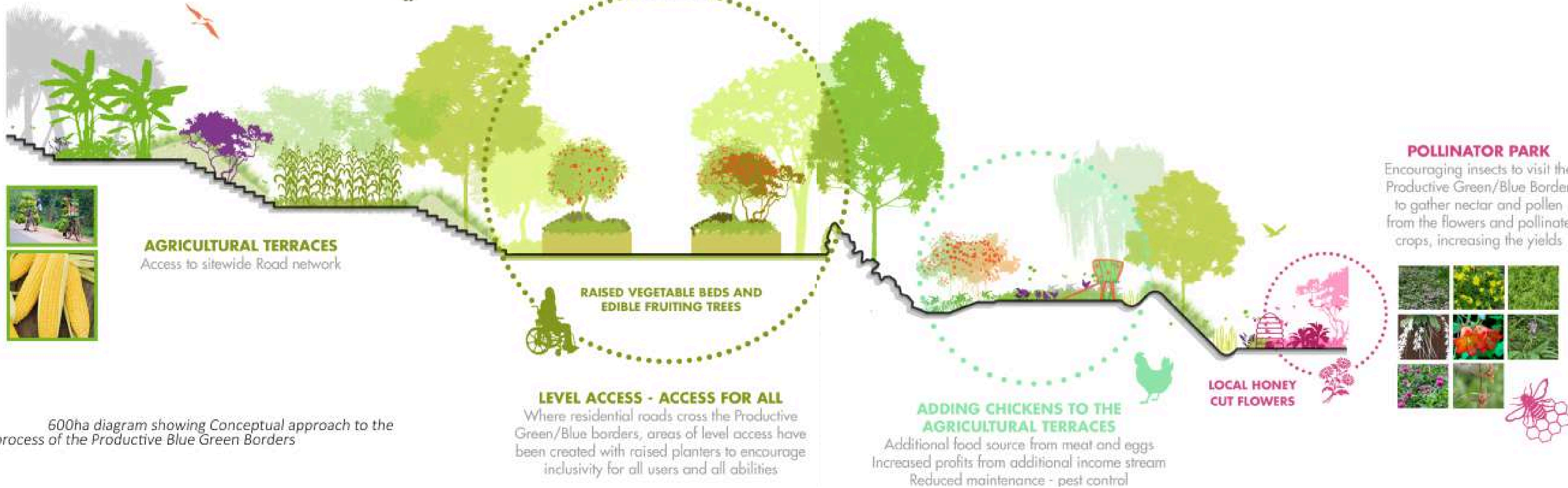
Tree pit details designed to ensure adequate soil volume, drainage, and long-term root development within urban hardscape conditions.

The tree strategy establishes a multi-layered canopy system aligned with topography, circulation, and environmental performance. Tree typologies are to enhance shading, reduce heat gain, and structure spatial identity, while integrated support soil health, drainage efficiency, and long-term growth within urban conditions.



01 SPATIAL EXPERIENCE

A terraced public realm that choreographs movement, shade, and water to create a sequence of inhabitable outdoor environments. A sequence of shaded gathering areas, agricultural terraces, and ecological zones creates a continuous experiential gradient between built form and landscape. Water-sensitive design strategies, including bio-retention systems and controlled drainage networks, are embedded within the terrain to ensure long-term resilience and performance.



600ha diagram showing Conceptual approach to the process of the Productive Blue Green Borders

01 LANDSCAPE DRAINAGE & TECHNICALITIES

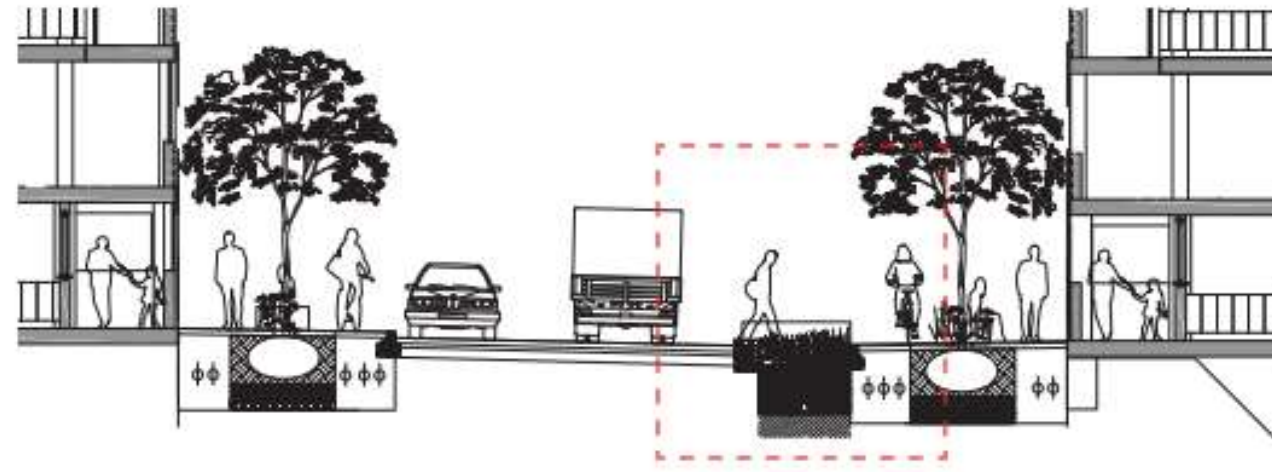


Fig. 88 Section through typical Conveyance Bioswale scenario 1 - Asymmetrical

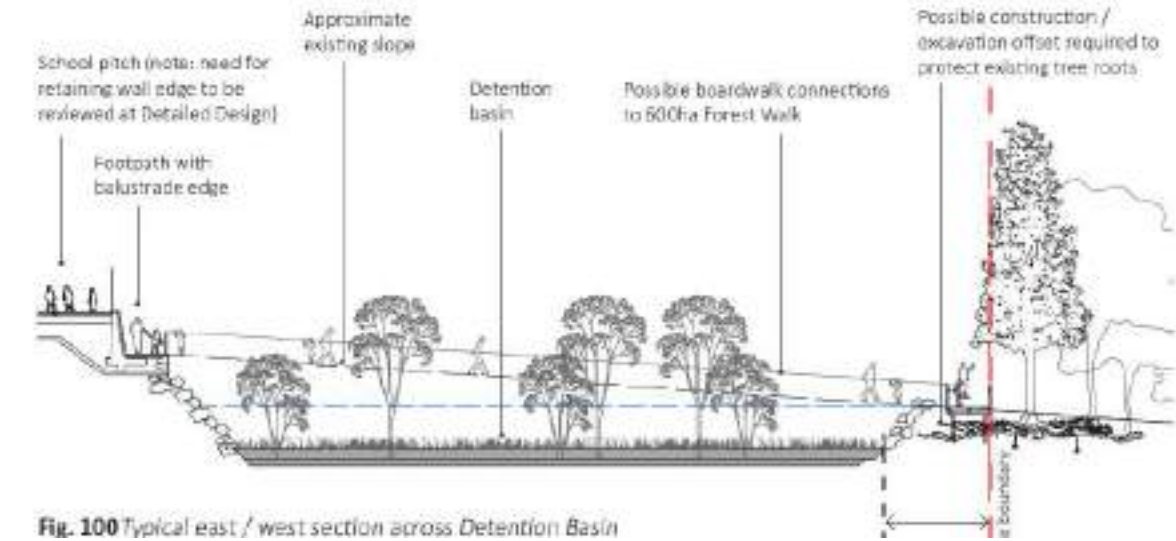
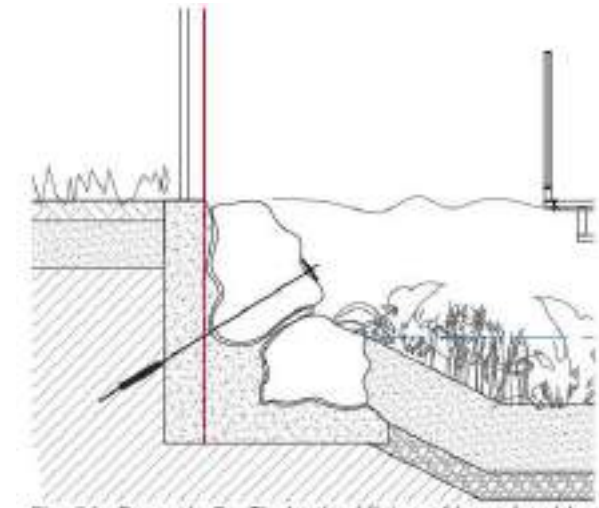
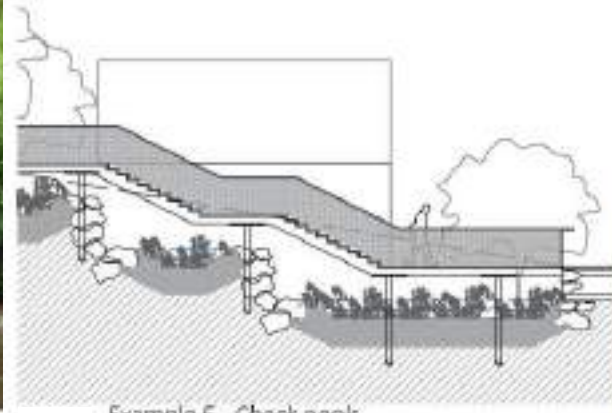


Fig. 100 Typical east / west section across Detention Basin



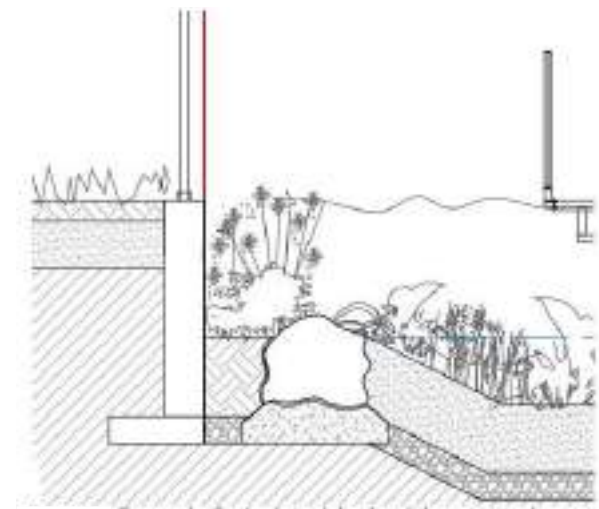
Example D - Tie backs / fixing of large boulders



Example E - Check pools



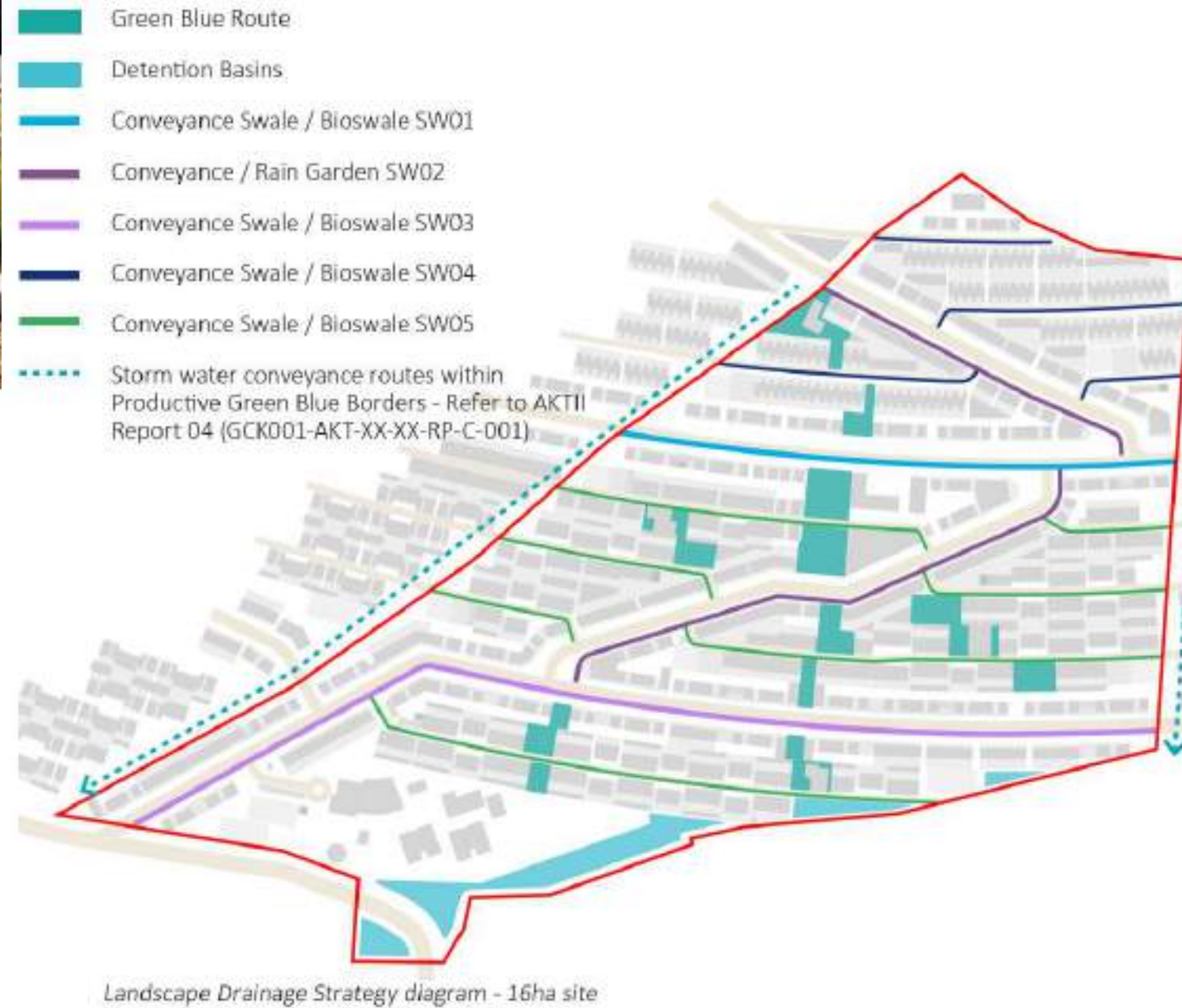
Example E - Stepped weirs



Example F - Isolated / raised / protected areas of planting



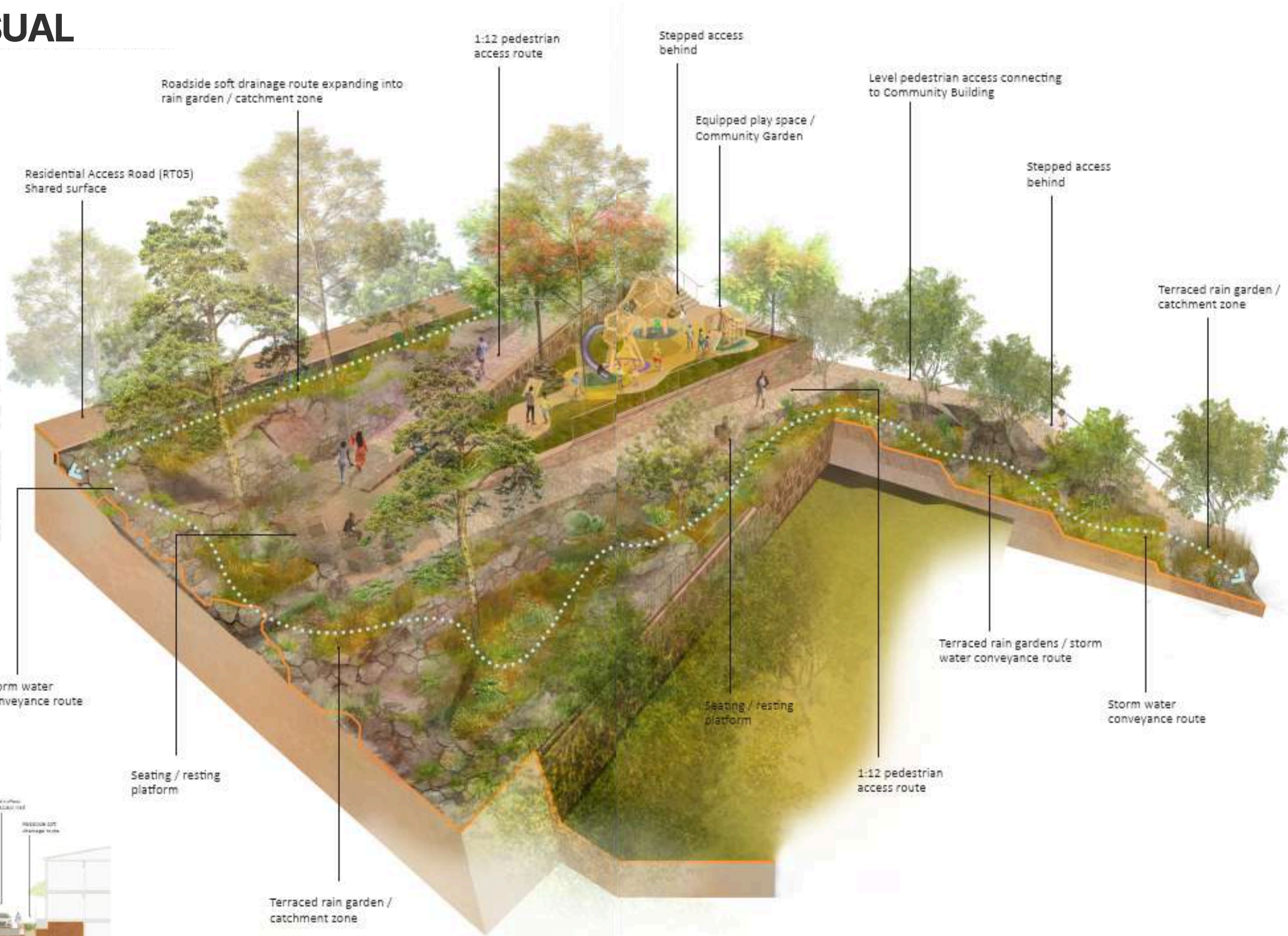
The landscape is structured as a performative surface where sculpted swales, rain gardens, and detention basins are seamlessly integrated into public spaces, allowing water to be visibly absorbed, filtered, and reused. The system follows natural topography, ensuring efficient runoff management while enhancing the spatial and sensory experience of the terrain.



Landscape Drainage Strategy diagram - 16ha site

01 TYPICAL AREA VISUAL

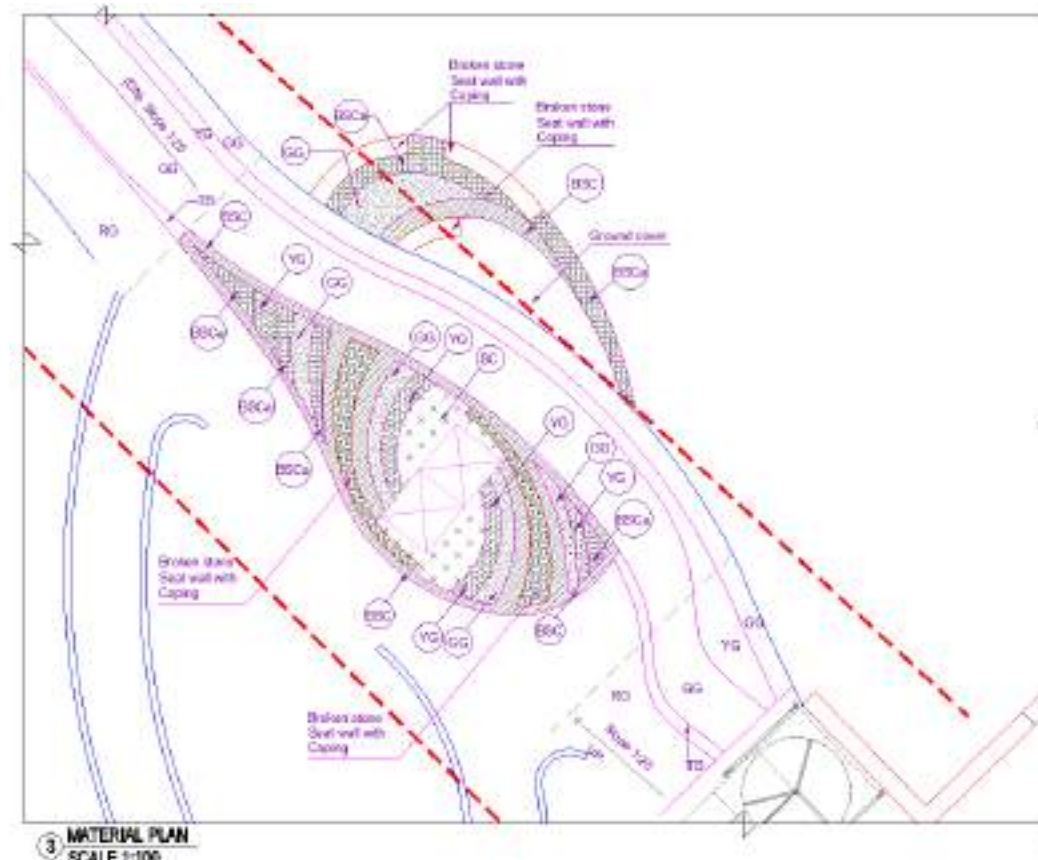
- Road Type 1 - Primary Collector
Road: 50/60cm stone sets (PM00)
Footpath: (A) Natural Stone. For cycle lane see options.
- Road Type 2 - Secondary Collector
Road: 50/60cm stone sets (PM00)
Footpath: (A) Natural Stone. For cycle lane see options.
- Road Type 3 - 1:12 diagonal
Road: 50/60cm stone sets (PM00)
Footpath: (A) Natural Stone. For cycle lane see options.
- Road Type 4 - Residential access road
Shared surface: Rough cut stone with smooth surface (PM04)
- Road Type 5 - Residential access road (incremental housing)
Shared surface: Crushed / compacted earth gravel (PM02)
- Feature Pedestrian crossing
Patterned natural stone (PM03)
- Green Blue Routes & Plazas
(A) Pedestrian routes
(B) Social spaces
(C) Equipped play areas
(E) Elevated pedestrian crossing patterns
- Stepped access profiles
(B)



LANDSCAPE REGENERATION FRAMEWORK - BADSHAHPUR CANAL

Location: Gurugram, India
Area: 130.000 m²
Project Type: Landscape regeneration
Status: Completed
Role: Landscape design concepts & detail drawings

02



LANDSCAPE THRESHOLD DESIGN & ENTRANCE DETAILS

02

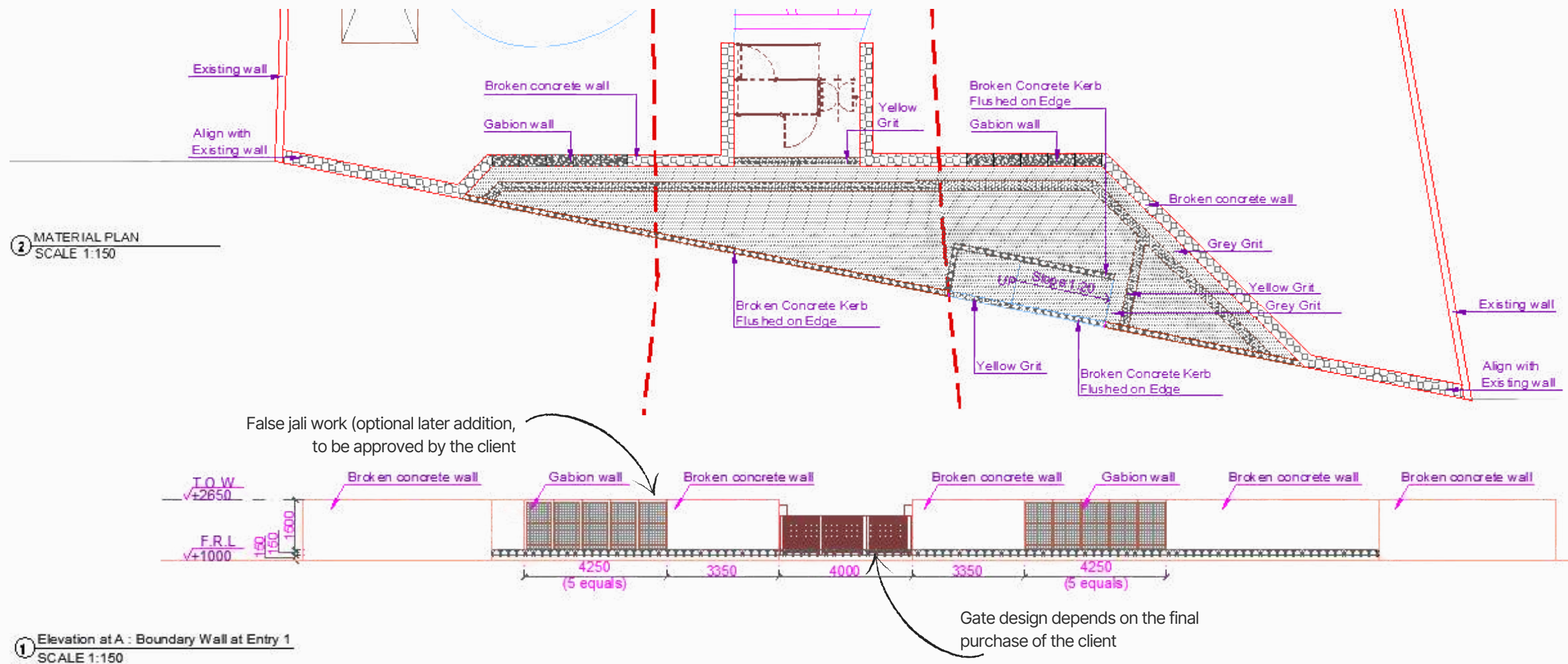


A. BENCH (TYPE 1)	B. BENCH (TYPE 2)	C. SQUARE SEAT / PLINTH	D. BOLLARD LIGHT	E. WASTE BIN
Material : Hardwood timber slats on precast concrete base Length : 1800 mm	Material : Brick / stone with timber seating Height : 450 mm	Material : Precast concrete Size : 450x450x450 mm	Material : Powder coated aluminium Height : 900 mm	Material : Steel frame with timber cladding Capacity : 80 L

A. POLE LIGHT	B. BOLLARD LIGHT	C. UPLIGHT	D. STEP / WALL LIGHT
Height : 4.5 – 5.0 m Use : General illumination	Height : 0.9 m Use : Pathway & landscape	Height : 0.5 m Use : Feature trees & accents	Height : - Use : Stairs & low walls
All lights to be LED with warm white (3000K) for comfort and safety.			

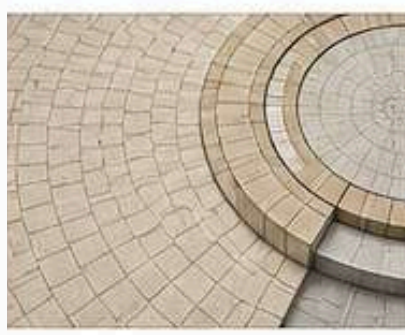
The rear entrance is designed as a landscape-integrated transition, combining terraced levels, accessible ramps, and layered planting to create a cohesive and user-friendly threshold.

Material articulation, drainage logic, and integrated lighting ensure durability, safety, and a refined spatial experience aligned with the overall site character.



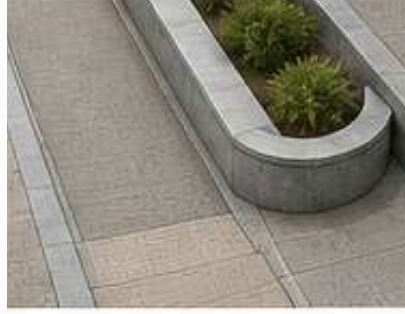


A. PRIMARY PLAZA PAVING



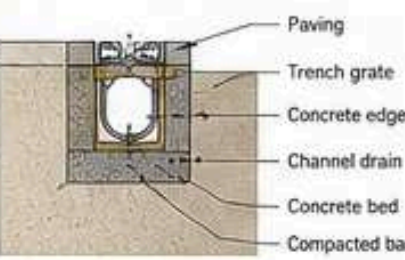
Material : Natural stone / precast concrete pavers
 Finish : Anti-slip, matte
 Pattern : Radial layout
 Jointing : 5-8 mm sand filled joints

B. PEDESTRIAN PATHWAYS AND RAMPS



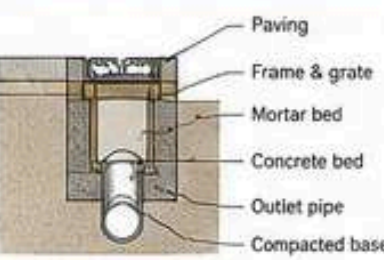
Material : Brushed concrete
 Slope : 1:12 (accessibility compliant)
 Edge : Flush kerb / chamfered edge
 Insert : Tactile paving at transitions

A. LINEAR TRENCH DRAIN



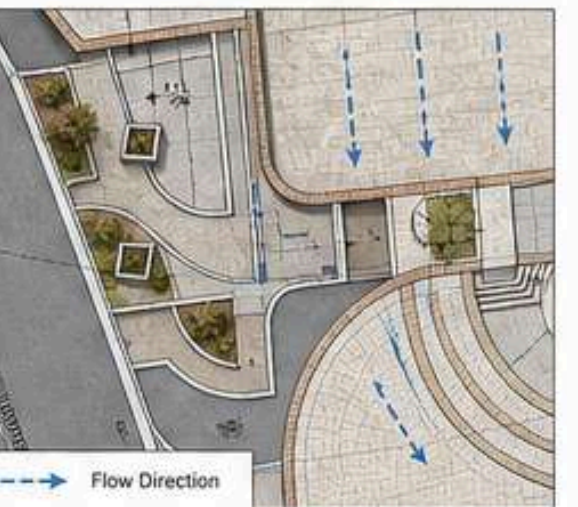
Used along road edges, ramp sides and low points to capture surface run-off.

B. POINT DRAIN



Installed at low spots and intersection points of drainage flow.

C. SURFACE SLOPE & FLOW



All paved areas are graded to minimum slope of 1:80 towards drains.

A. PLAY STRUCTURE WITH SLIDES



Material : Powder coated steel & HDPE panels
 Use Zone : As per safety standards
 Surface : EPDM / Rubberized safety flooring

B. SWINGS



Material : Powder coated steel
 Seats : Flexible belt seats
 Surface : EPDM / Rubberized safety flooring

C. SPRING ROCKER



Material : HDPE / Steel
 Use Zone : As per safety standards
 Surface : EPDM / Rubberized safety flooring

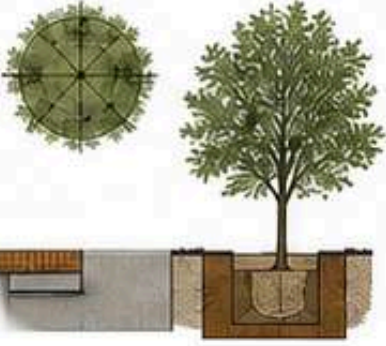
D. SPINNER



Material : Powder coated steel
 Diameter : 1.50 m
 Surface : EPDM / Rubberized safety flooring

All play equipment to comply with EN 1176 / IS 9873 safety standards.

A. TREE PLANTING



Type : Medium canopy shade trees
 Spacing : 4 - 6 m c/c
 Pit Size : Min. 1.2m x 1.2m x 1.0m
 Soil : Structural soil mix with drainage layer

Positioned along pedestrian edges and seating zones to enhance thermal comfort and reduce surface heat.

B. SHRUB LAYER



Function : Edge definition and visual buffering
 Height : 0.6 - 1.2 m
 Arrangement : Clustered / informal

Defines play zone boundaries while maintaining visual permeability for safety and supervision.

C. GROUND COVER / LAWN



Type : Drought tolerant grass / native ground cover
 Application : Play area edges and buffer zones

Drought-tolerant groundcover supporting soil stabilisation and reducing surface runoff in high-use zones.

D. PLANTING STRATEGY & PALETTE

Layered planting system designed to provide shade, define spatial edges, and support surface water infiltration across play and circulation zones.

Trees (Canopy Layer)

- Lagerstroemia indica
- Peltophorum plerocarpum
- Delonix regia

Shrubs (Middle Layer)

- Duranta erecta
- Ixora coccinea
- Hibiscus rosa-sinensis

Ground Cover / Grasses (Lower Layer)

- Liriope spicata
- Wedelia trilobata
- Cynodon dactylon

PLANTING SYSTEM LAYERS

- CANOPY LAYER**
Shade, microclimate improvement
- SHRUB LAYER**
Edge definition, visual buffer
- GROUND COVER**
Soil stabilisation, erosion control, runoff reduction.

PERFORMANCE INTEGRATION

- Provides shade and reduces surface temperature.
- Improves walkability and user comfort.
- Supports surface water infiltration and reduces runoff.
- Uses climate-adapted, low-maintenance species for long-term resilience.

LANDSCAPE & PLAY ENVIRONMENT SYSTEM

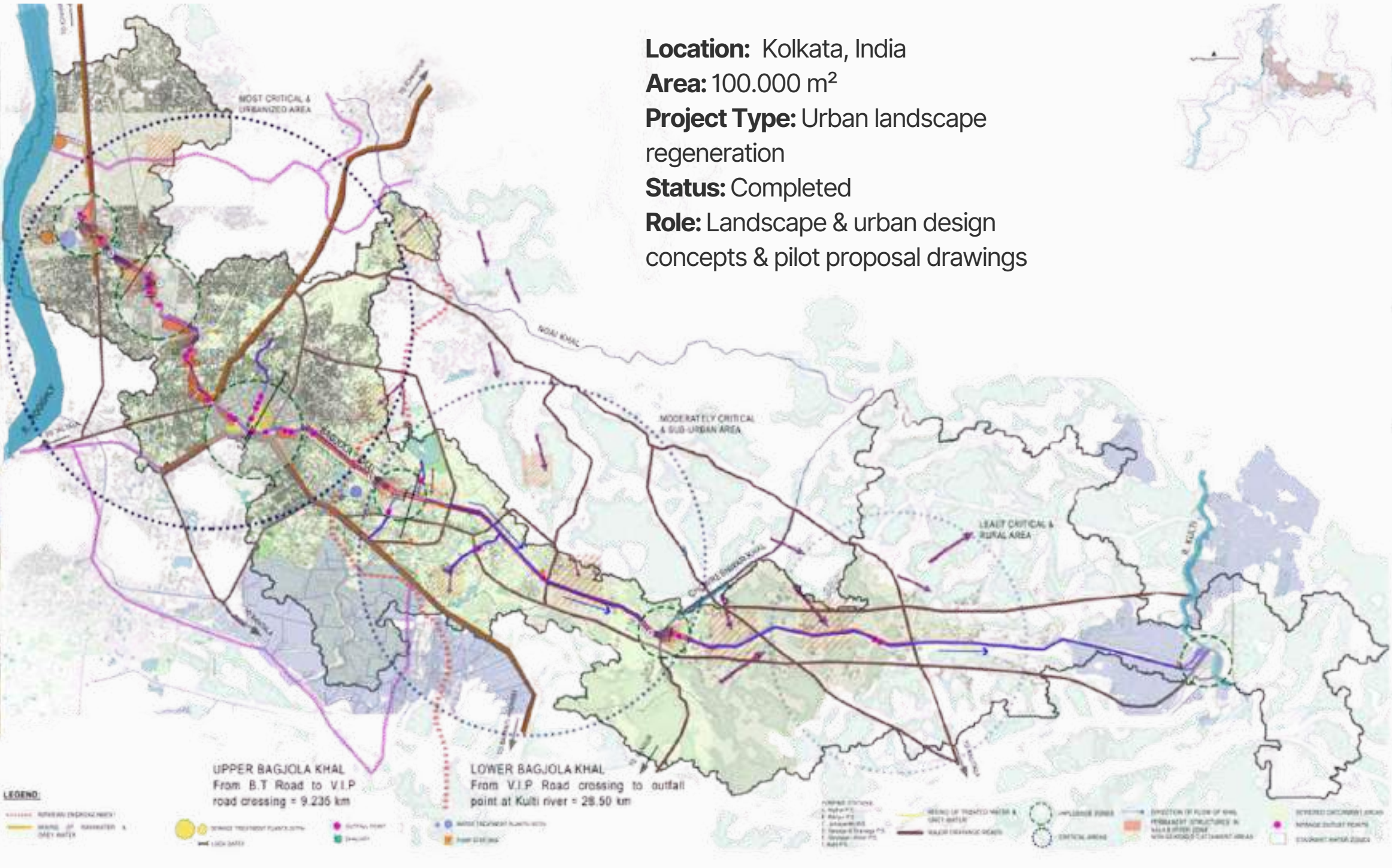
02

- SAFE & INCLUSIVE**
Clear sightlines and soft buffers ensure child safety.
- COMFORTABLE & LIVABLE**
Shade, greenery and materials enhance outdoor comfort.
- SUSTAINABLE & RESILIENT**
Water-sensitive design and native planting support environmental performance.
- ATTRACTIVE & ENGAGING**
Thoughtful design and play elements create joyful experiences.

URBAN WATER LANDSCAPE SYSTEM & CANAL REGENERATION

Location: Kolkata, India
Area: 100.000 m²
Project Type: Urban landscape regeneration
Status: Completed
Role: Landscape & urban design concepts & pilot proposal drawings

- INCOMPLETE SEWAGE NETWORKS**
 + Sewer pipes with little or no facilities for it
- LANDCOVER & LAND USE CHANGE**
 + Landscape fragmentation
 + Loss of riparian buffer zones
- EMBANKMENT**
 + Acts as a visual barrier
 + Kills the natural buffer zone of the riparian area
 + Creates accessibility restrictions
- CONFLICTING OWNERSHIPS**
 + Open areas are inaccessible
 + Issues in stream management
 + Change use of space according to ownership convenience
- URBANISATION**
 + Diffuse surface runoff due to encroached settlements
 + Siltation & disturbance in catchment areas
 + Groundwater depletion
- LOST WATER BODIES & LOW-LYING AREAS**
 + Landfilling & encroached low-lying areas for building
 + Many seasonal channels have disappeared from the area
 + Water logging issues



STRATEGIC FRAMEWORK

- ECOLOGICAL PRESERVATION**
 Conserve natural ecosystems, wetlands, and biodiversity along the canal edges.
- FLOOD RISK MITIGATION**
 Reduce flood risks through improved drainage capacity, detention zones and resilient infrastructure.
- PUBLIC REALM ACTIVATION**
 Improve public access, recreation spaces and waterfront activities to strengthen community value.
- BLUE-GREEN NETWORK INTEGRATION**
 Connect canals with green corridors, parks and urban mobility networks.
- WATER FLOW & INFRASTRUCTURE MANAGEMENT**
 Control water quality, flow regulation, and maintenance through integrated infrastructure systems.

03

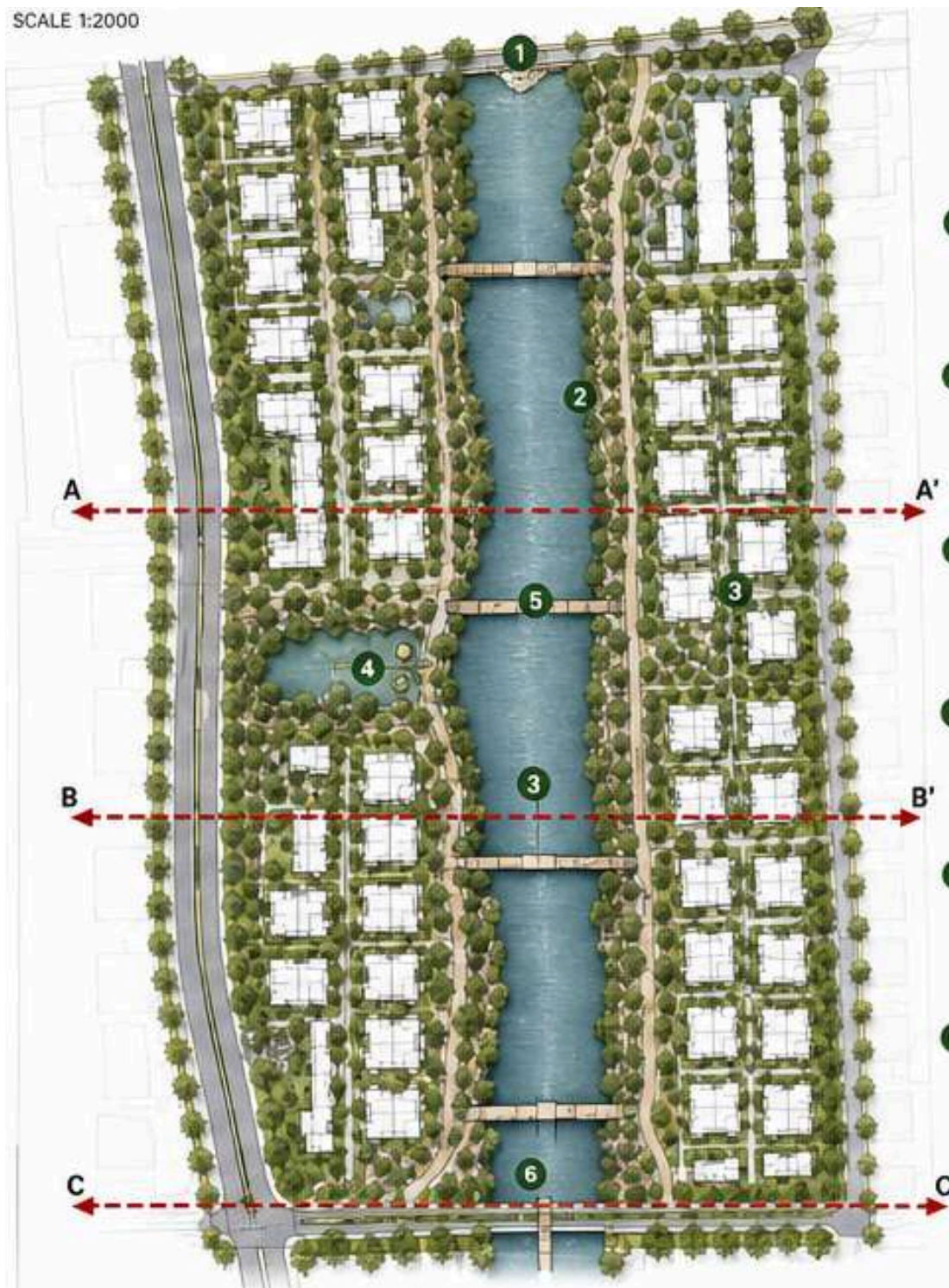
The Concept

The project investigates the regeneration of Bagjola Canal as a landscape infrastructure system that integrates water management with urban development. Based on spatial and hydrological analyses, the proposal redefines the canal as an ecological spine that supports drainage, connectivity, and public space.

SYSTEM STRATEGY DIAGRAM



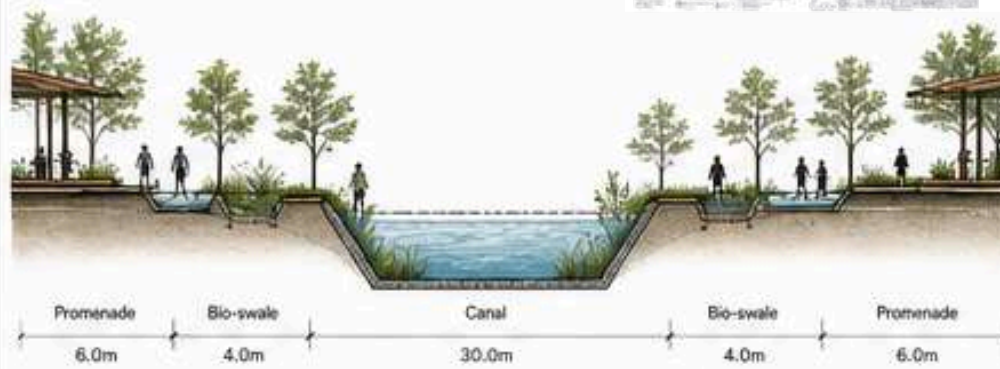
SCALE 1:2000



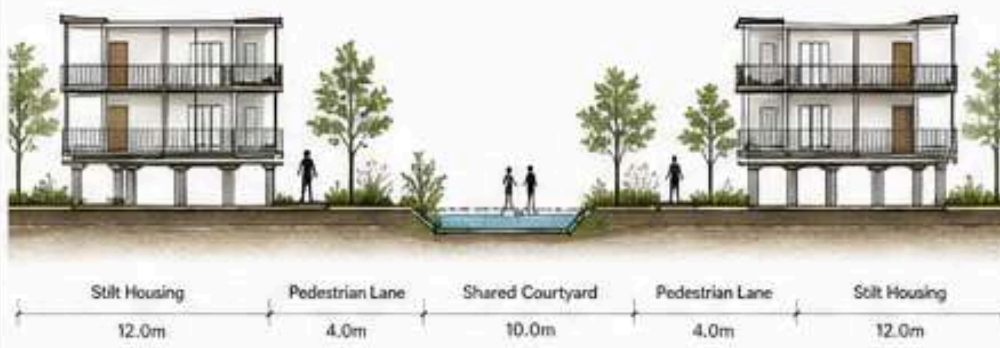
- 1 COMMUNITY PLAZA**
Cultural gathering space with pavilion and seating
- 2 WATERFRONT PROMENADE**
Continuous public edge with landscape and activities
- 3 ELEVATED HOUSING**
Stilts based resilient housing typology
- 4 ECO PARK**
Restored wetland with boardwalk and biodiversity
- 5 PEDESTRIAN BRIDGE**
Connecting both edges and improving accessibility
- 6 FLOOD RESILIENCE**
Retained channels and bioswale network

SCALE 1:500

SECTION A-A'
Through Canal & Promenade



SECTION B-B'
Through Settlement Edge



SECTION C-C'
Through Eco Park & Wetland



- Residential Blocks
- Stilt Housing
- Public Plaza
- Pedestrian Promenade
- Pedestrian Lane
- Bridges
- Water Body
- Wetland / Eco Park
- Bioswale
- Trees

STRATEGIC FRAMEWORK



EXISTING CONTEXT	HIERARCHY OF SETTLEMENTS	HOUSING TYPOLOGIES	PRESENT CONTEXT
1998	Hierarchy of settlements	Housing typologies	2016
1998	Hierarchy of settlements	Housing typologies	2016

STRATEGIC FRAMEWORK

- WATER RESILIENCE**
Enhance storage, infiltration, and water quality through wetlands, bioswales, and retained channels.
- SETTLEMENT RESTRUCTURING**
Relocate vulnerable housing to resilient typologies, creating safe and healthy living environments.
- PUBLIC REALM & ACCESSIBILITY**
Continuous pedestrian network and inclusive public spaces along the waterfront.
- ECOLOGICAL RESTORATION**
Restore wetlands and increase biodiversity through native planting and habitat creation.
- CONNECTIVITY & INTEGRATION**
Link green-blue networks with movement corridors to strengthen urban and ecological connectivity.

MATERIAL & LANDSCAPE PALETTE

HARDSCAPE	EDGE TREATMENT
Permeable Paving Stone Paving Timber Deck Concrete Seating	Stone Pitching RC Retaining Wall Gabion Wall Boardwalk

PLANTING STRATEGY

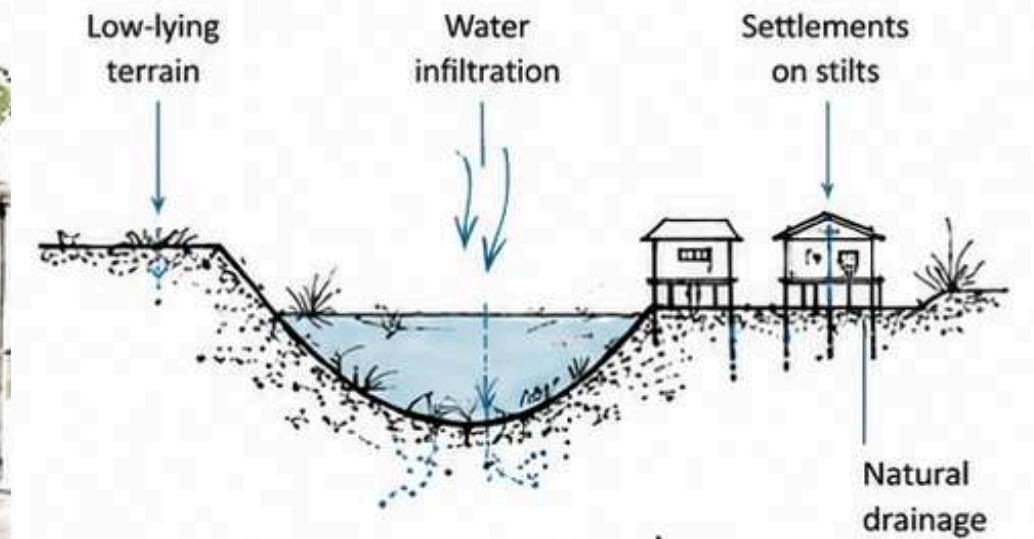
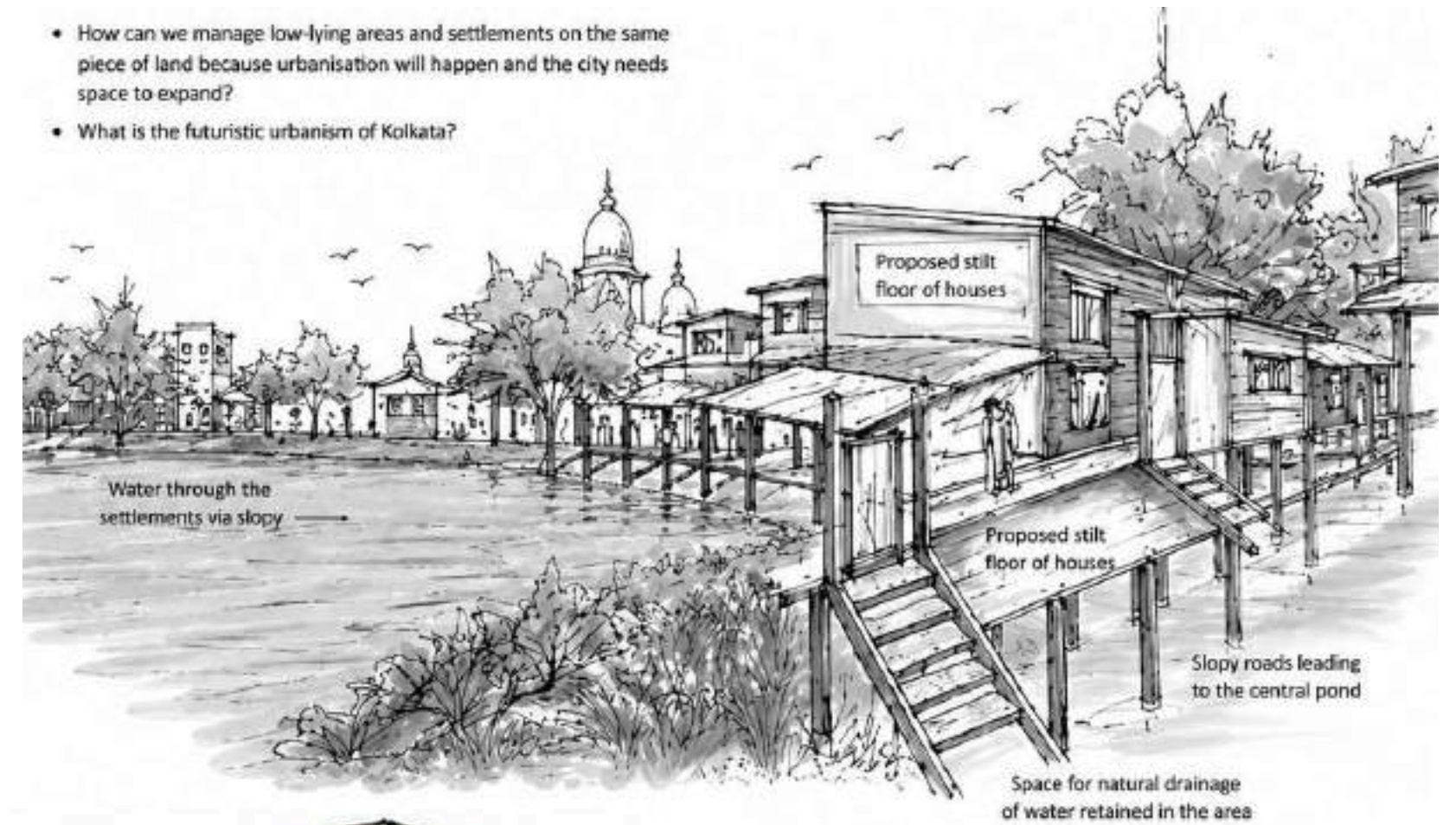
Riparian Trees	Shade Trees	Wetland Plants	Groundcover
Barringtonia acutangula	Peltophorum pterocarpum	Typha latifolia	Hymenocallis littoralis

03 PROPOSED VIEWS

Modern with cultural identity. A pavilion combining modern and cultural nuances.

The canal is reimaged as a resilient waterfront landscape integrating housing, ecology, and public space. Elevated settlements and restored drainage systems respond to flood risks, while continuous public edges activate the canal as an accessible and inclusive urban spine.

- How can we manage low-lying areas and settlements on the same piece of land because urbanisation will happen and the city needs space to expand?
- What is the futuristic urbanism of Kolkata?



Restored natural drainage



Elevated & resilient settlements



Public spaces along waterfronts



Improved water quality



Resilient & inclusive communities

04

RESIDENTIAL LANDSCAPE DEVELOPMENT

Location: Gorakhpur, India
Area: 100.200 m²
Project Type: Residential Complex
Status: Completed
Role: Lead designer responsible for landscape structuring

Large-scale landscape framework integrating circulation networks, open spaces, and green infrastructure to establish a cohesive, climate-responsive residential environment.

SPATIAL HIERARCHY DIAGRAM



01
 Defined entrance plaza establishing identity through axial alignment, water features, and structured planting.



02
 Central open space designed as a focal gathering node integrating landscape geometry and pedestrian movement.



03
 Linear green corridors connecting residential clusters, enhancing walkability and spatial continuity.

DESIGN INTENT
 To create a cohesive and livable residential landscape that balances built form, open space, and nature through structured circulation, water sensitive design and hierarchical green systems.

SPATIAL HIERARCHY
 Clear sequence of spaces from public to private.

GREEN CONNECTIVITY
 Continuous green corridors linking all clusters.

WATER RESPONSIVE
 Integrated water features & rainwater management.

PEDESTRIAN FOCUSED
 Walkable, shaded and safe movement network.

SUSTAINABLE & DURABLE
 Robust planting and materials for long term performance.



Central Park Multi-functional green space for recreation, community gathering, and passive leisure.



Recreational Pool Area Integrated water features and seating decks creating vibrant leisure spaces within the landscape.



Seating Plaza Shaded seating courts with water elements, enhancing comfort and social interaction.



Typical Cluster Plan Organised residential clusters with internal green courtyards, drop-off zones, and peripheral parking for efficient circulation.



Landscape Node Plan Detail of central landscape node showing paving pattern, planting, and seating arrangement.



Section A-A' Illustrating spatial organisation of central median, circulation, and landscape layering.



PUBLIC REALM SYSTEM & LANDSCAPE DETAIL INTEGRATION 04

A cluster-based spatial composition organises residential units around shaded internal courtyards, creating intimate outdoor environments that enhance thermal comfort, walkability, and social interaction. The landscape hierarchy transitions from private thresholds to communal greens, ensuring a coherent and immersive living experience.

Note: All dimensions are indicative. Refer to engineering drawings for structural and MEP coordination.

05

RESIDENTIAL HOUSING COMPLEX - CONCEPT

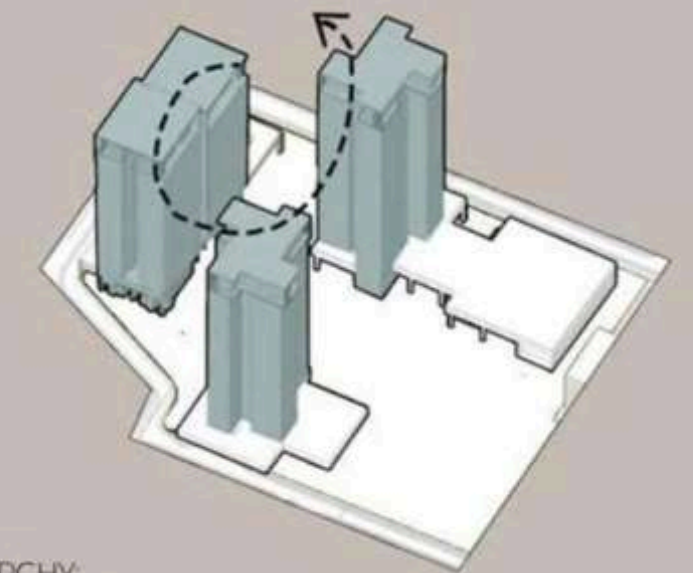
Location: Gurugram, India

Area: 60.000 m²

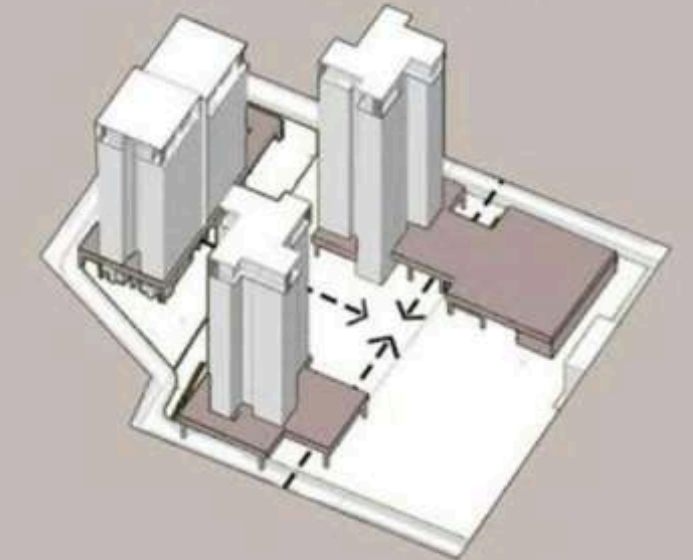
Project Type: Housing Township

Status: Completed

Role: Urban Design Concept & Landscape structuring



HEIRARCHY:
To balance the verticality of the tower. Iconic Towers - height of 30 & 28 floors. Twin towers - height of 25 and 23 floors.



PUBLIC FLOORS AND WALKWAYS: To break verticality of the towers, public floors are created as a horizontal break - also serve the dual purpose of acting as a walkway - opening up to the central public realm



ACTIVATING GREEN SPACES & VERANDAHS:
To further continue the concept of the central green space - verandahs are provided on higher levels on all floors in the Iconic Tower and on every four floors in the Twin Towers.



LANDSCAPE & DRAINAGE DETAILS 05

The landscape strategy is structured around a hierarchical open space system, integrating central communal greens with peripheral movement corridors and semi-private thresholds. The design establishes a continuous ecological surface.



PLANTING PALETTE

TREES



SHRUBS & GROUNDCOVERS

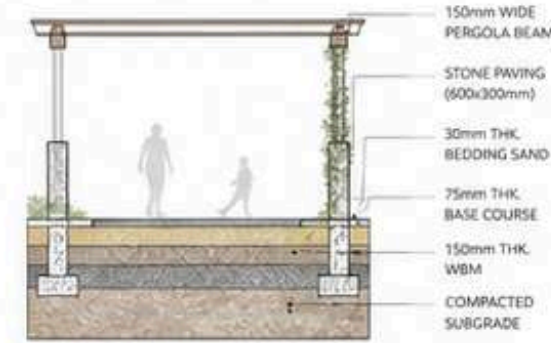


MATERIAL PALETTE



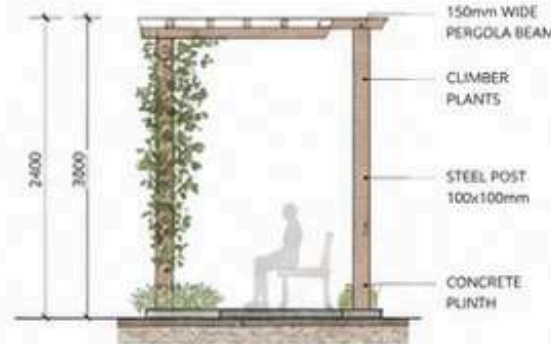
TYPICAL WALKWAY DETAIL

SCALE 1:20



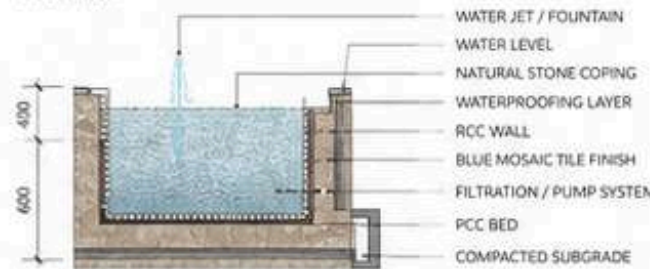
PERGOLA SECTION

SCALE 1:20



WATER FEATURE SECTION

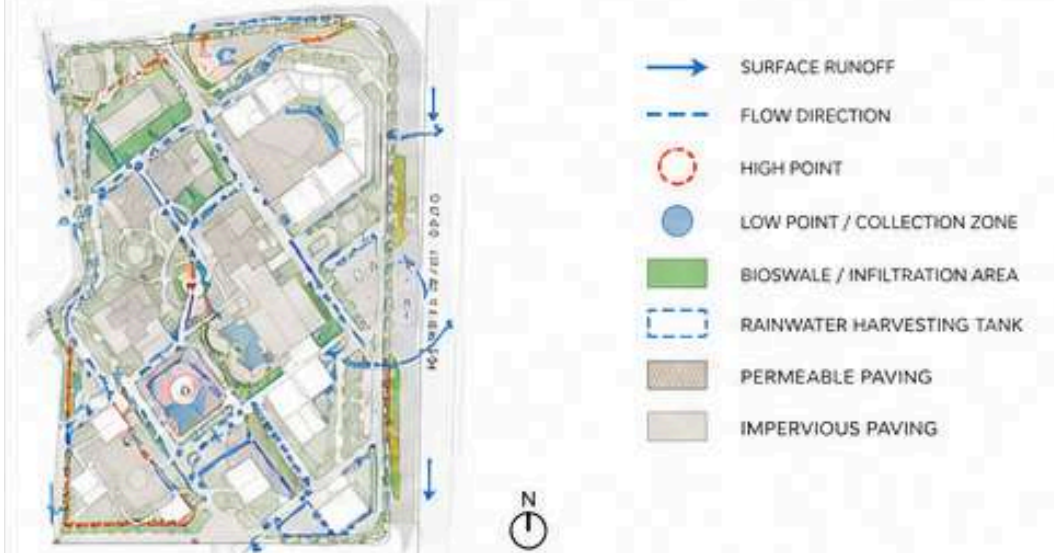
SCALE 1:20



RAINWATER HARVESTING DIAGRAM



SURFACE WATER FLOW & DRAINAGE STRATEGY



CENTRAL GREEN SECTION (AA')

SCALE 1:150



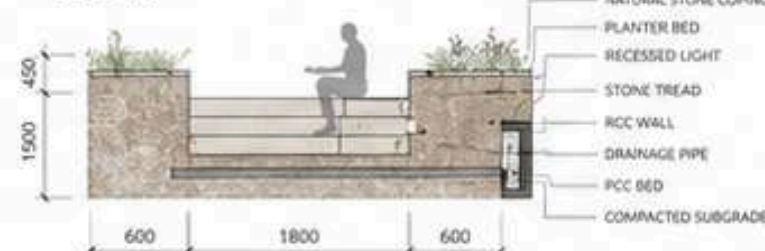
DRIVEWAY SECTION (BB')

SCALE 1:100



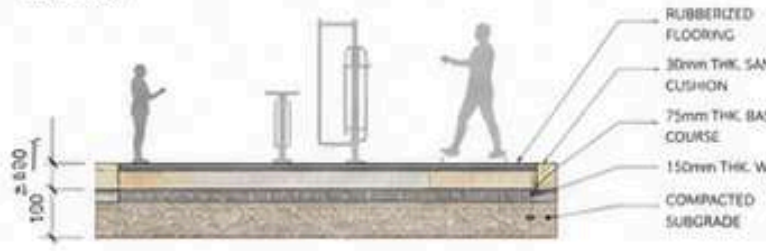
SUNKEN SEATING COURT DETAIL

SCALE 1:20



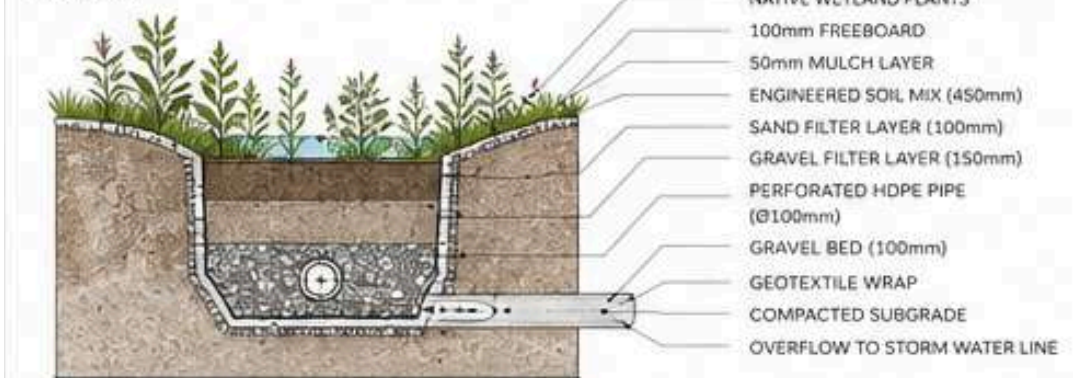
OUTDOOR FITNESS AREA DETAIL

SCALE 1:20



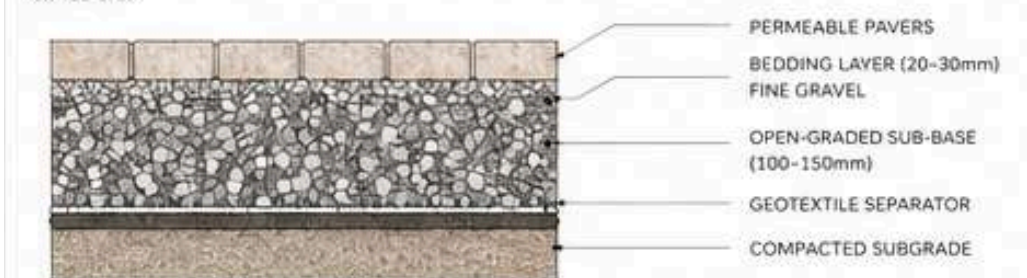
BIO-SWALE / INFILTRATION TRENCH DETAIL

SCALE 1:20



PERMEABLE PAVEMENT DETAIL

SCALE 1:10



NOTES

- All dimensions are in millimeters unless specified.
- Levels are in meters.
- All planting to be in accordance with the planting palette.
- Use permeable materials for paths and driveway wherever possible.



06

Location: Chennai, India

Area: 9.000 m²

Project Type: Institutional Complex

Status: Under Construction

Role: Urban design concept & Landscape development

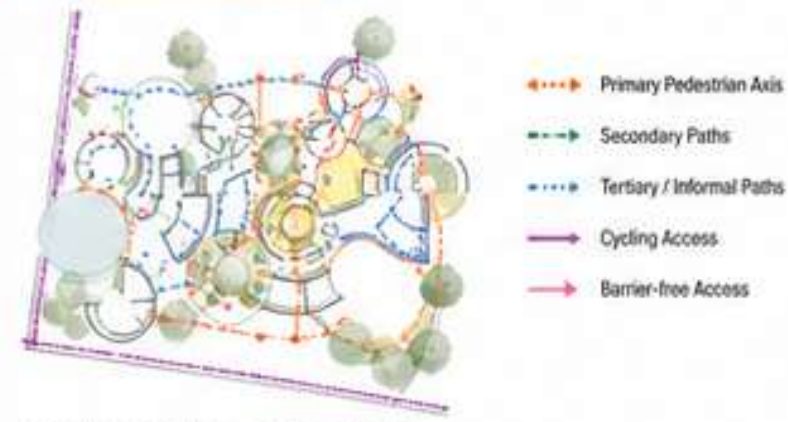
06 STUDENT'S ACTIVITY CENTRE

Engaging campus strategies respond to a cohesive outdoor environment.

1. LANDSCAPE MASTER PLAN

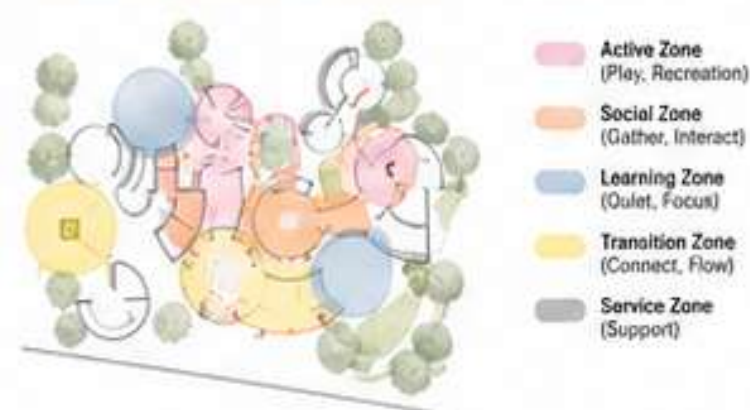


2. CIRCULATION STRATEGY



Clear hierarchy of movement ensures easy orientation, accessibility and seamless connection to surrounding campus.

3. SPATIAL & PROGRAM STRATEGY



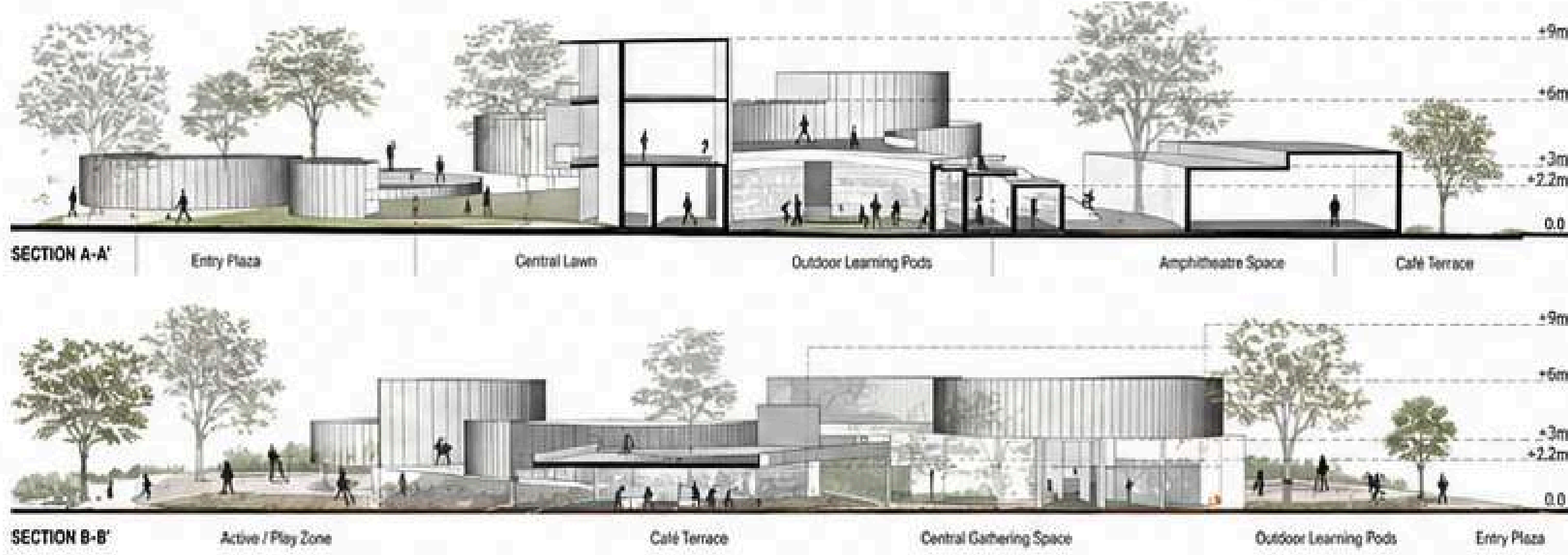
Zoning creates a balance of active and quiet spaces while maintaining visual and physical connections across the site.

The landscape strategy is structured around a hierarchical open space system, integrating central communal greens with peripheral movement corridors and semi-private thresholds. The design establishes a continuous ecological surface. Tree canopies and landscaped buffers are strategically positioned to mitigate heat gain, improve air quality, and create thermally comfortable outdoor environments.

DESIGN STRATEGIES

<p>MICROCLIMATE COMFORT</p> <p>Shaded spaces and green buffers reduce heat and improve outdoor comfort.</p>	<p>WATER SENSITIVE DESIGN</p> <p>Bioswales and rain gardens promote infiltration and groundwater recharge.</p>	<p>SOCIAL & COMMUNITY SPACES</p> <p>Well-designed spaces foster interaction, wellbeing and a sense of community.</p>	<p>LOW MAINTENANCE & SUSTAINABLE</p> <p>Use of appropriate planting and durable materials ensures long-term performance.</p>
--	---	---	---

7. LANDSCAPE SECTIONS



8. PLANTING STRATEGY & PALETTE

CANOPY TREES

Peltophorum pterocarpum	Lagerstroemia speciosa	Doloneis regia	Ficus benjamina	Azadirachta indica

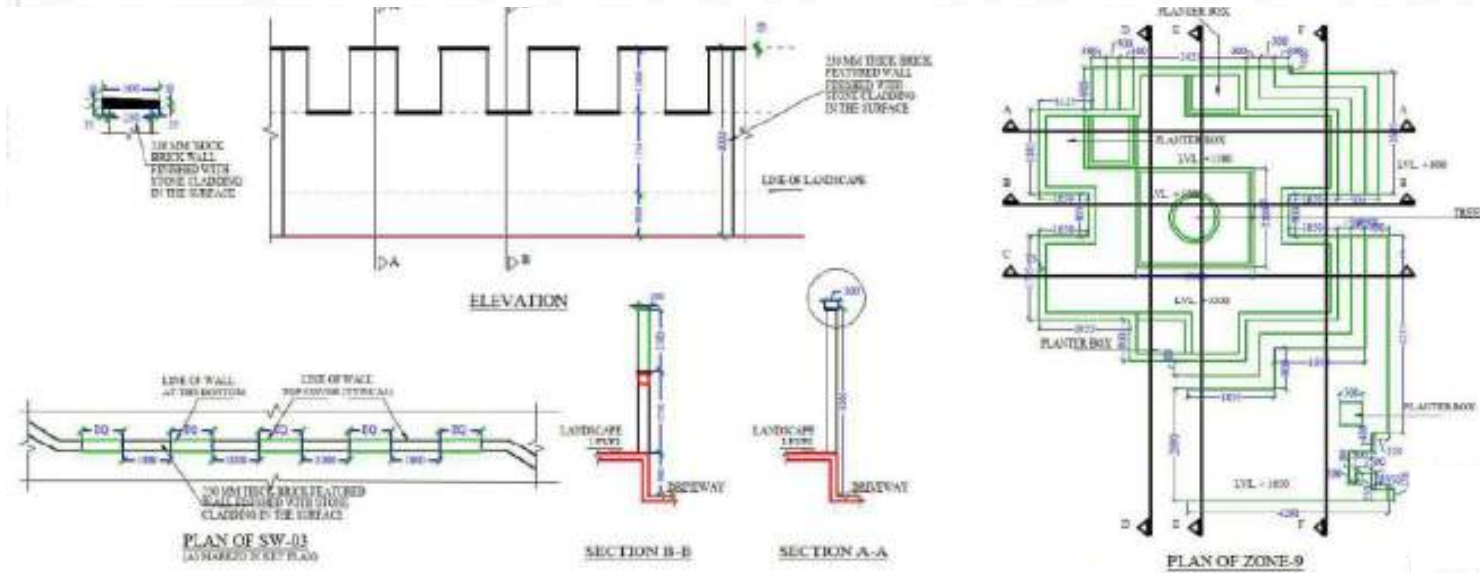
UNDERSTORY & ACCENT PLANTS

Plumeria rubra	Hibiscus rosa-sinensis	Heliconia pollicarorum	Alpinia purpurata	Clumping Bamboo

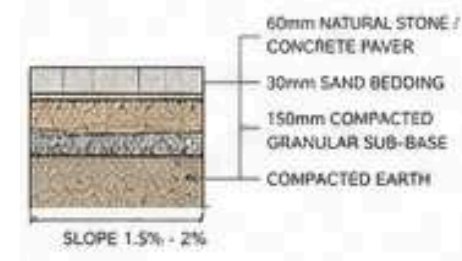
GROUND COVERS & GRASSES

Liriope muscari	Zoysia japonica	Wedelia trilobata	Pennisetum setaceum	Dianella tasmanica

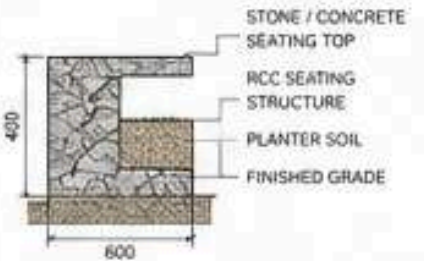
1. MASTER LANDSCAPE PLAN



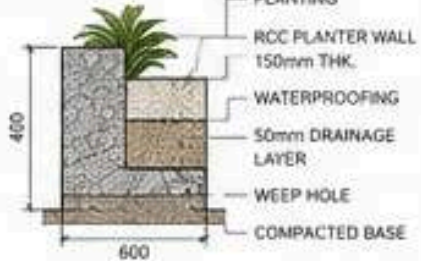
A. TYPICAL PATHWAY DETAIL



B. CONCRETE SEATING DETAIL



C. RAISED PLANTER DETAIL



3. PLANT PALETTE



All details developed to ensure constructability, drainage coordination, and durability within residential use conditions.

PAVING MATERIAL PALETTE



HARDSCAPE MATERIAL STRATEGY

Selected for durability, permeability, esthetic quality and low maintenance to ensure long-term performance in residential environments.



RESIDENTIAL APARTMENT

07

Location: Ranchi, India
Area: 5.000 m²
Project Type: Housing Township
Status: Completed
Role: Landscape design & details



DR. TAZYEEN ALAM | LANDSCAPE, DESIGN & PLANNING

+351 920603648 | tazyeen.alam@gmail.com